

Rosemount 2110 for Glue Level Control

RESULTS

- Reliable level control
- Short fork design provides minimal intrusion into the tank
- No moving parts minimize maintenance
- Fork design allows operation in viscous liquids
- Small, lightweight size allows mounting on thin wall vessels

APPLICATION

Level control of glue pots on cigarette machines. The PVA is kept at ambient pressure and temperature.

CUSTOMER

Cigarette manufacturing plants

CHALLENGE

PVA glue is used in the manufacture of cigarettes. It is applied to the edge of the paper that is wrapped around the tobacco, holding the finished product together.

Ordinarily, cigarette machines rely on operators to ensure that the glue pot is kept full. However, there are instances when the glue pot may run empty, causing the potential loss of materials for their product.

SOLUTION

Many processes have batching and header tanks, and there is usually the need to control a pump to maintain levels between set points, keeping the process supply line going. These tanks are often manufactured from thin wall materials and cannot support the weight of heavy instrumentation.

The Rosemount 2110 solves the problem, being lightweight and requiring only a threaded inlet for mounting. The 2110 is used to ensure the glue pot is kept full. One unit is installed as a low level device to trigger the filling cycle and the second is installed as a high level device to indicate when the tank is full. Many other devices have tried, but failed to meet the requirements of this application. The solution must be non-mechanical, with minimal intrusion due to restricted space, low maintenance, and reliable.

The 2110 operates on such machines with complete success.



Figure 1: The Rosemount 2110 vibrating fork level switch is lightweight and requires only a threaded inlet for mounting.

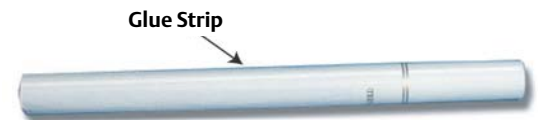
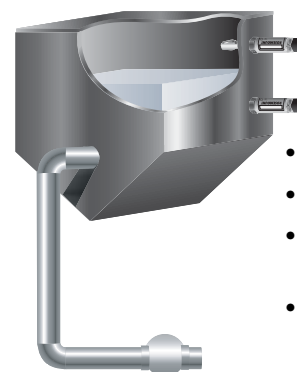


Figure 2: Position of glue strip on the cigarette.



- Lightweight
- 316 SST
- Hygienic mounting boss kit
- 3/4-in. threaded model

Figure 3: Rosemount 2110 mounting diagram for successful glue plot level control.

Rosemount and the Rosemount logotype are registered trademarks of Rosemount Inc.
All other marks are the property of their respective owners.

Emerson Process Management

Rosemount Inc.
8200 Market Boulevard
Chanhassen, MN 55317 USA
T (U.S.) 1-800-999-9307
T (International) (952) 906-8888
F (952) 949-7001
www.rosemount.com

Emerson Process Management

Europe, Middle East & Africa
Health Place
Bognor Regis
West Sussex PO22 9SH
England
Tel 44 1243 863121
Fax 44 1243 867554

Emerson Process Management

Emerson Process Management Asia Pacific
Private Limited
1 Pandan Crescent
Singapore 128461
T (65) 6777 8211
F (65) 6777 0947
Enquiries@AP.EmersonProcess.com

ROSEMOUNT[®]

For more information:
www.rosemount.com


EMERSON[™]
Process Management