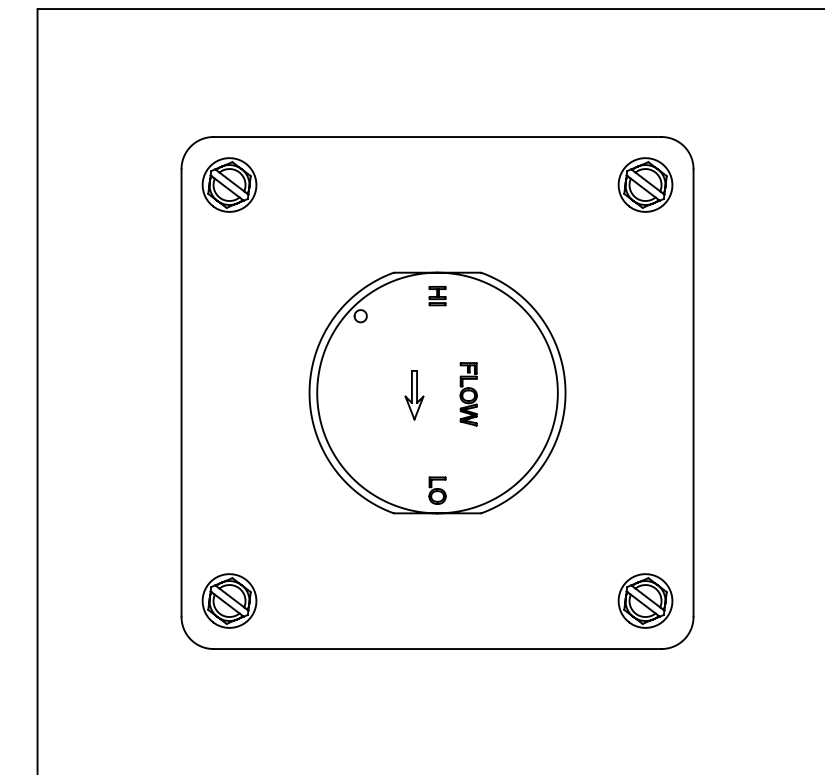
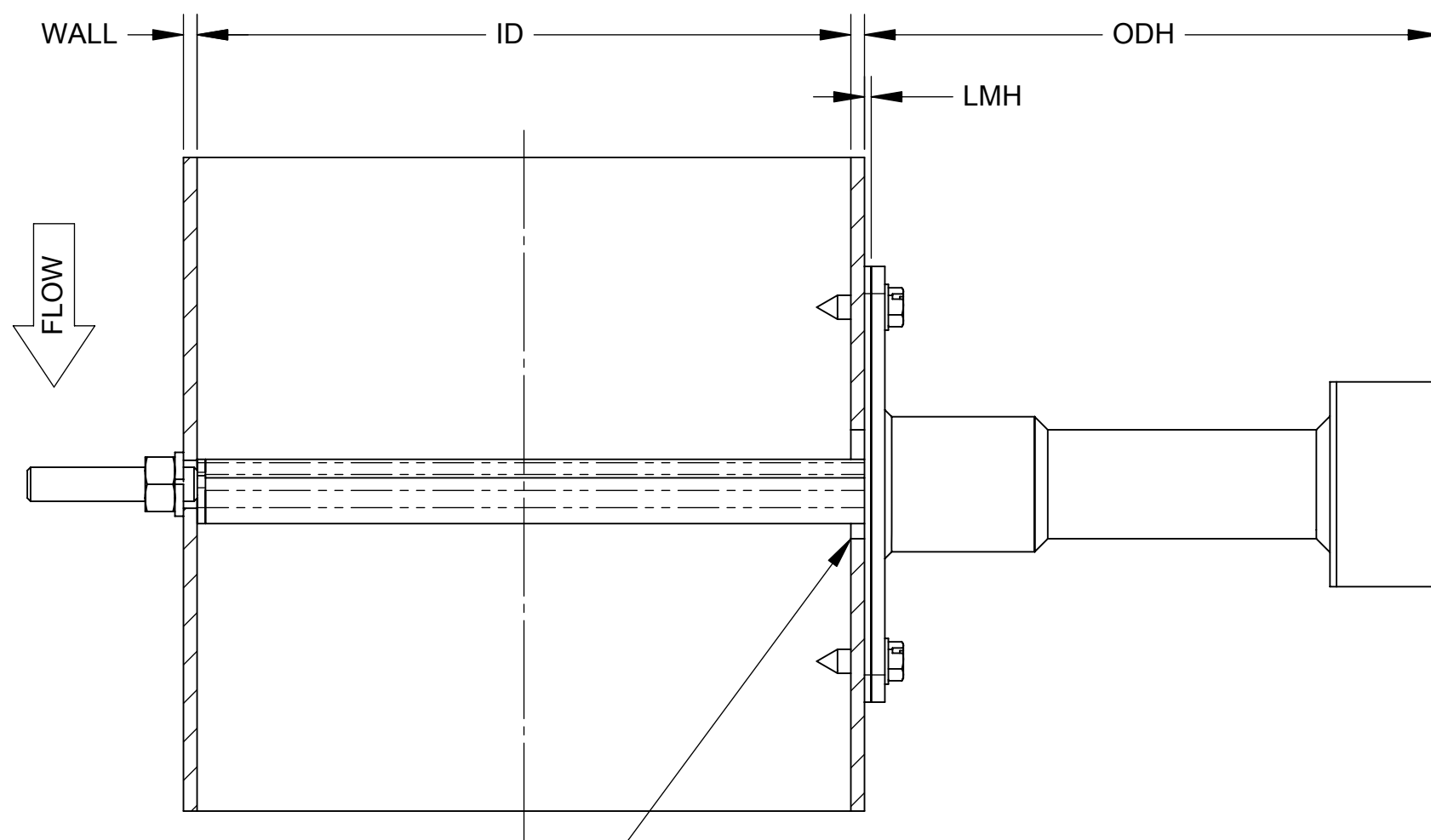
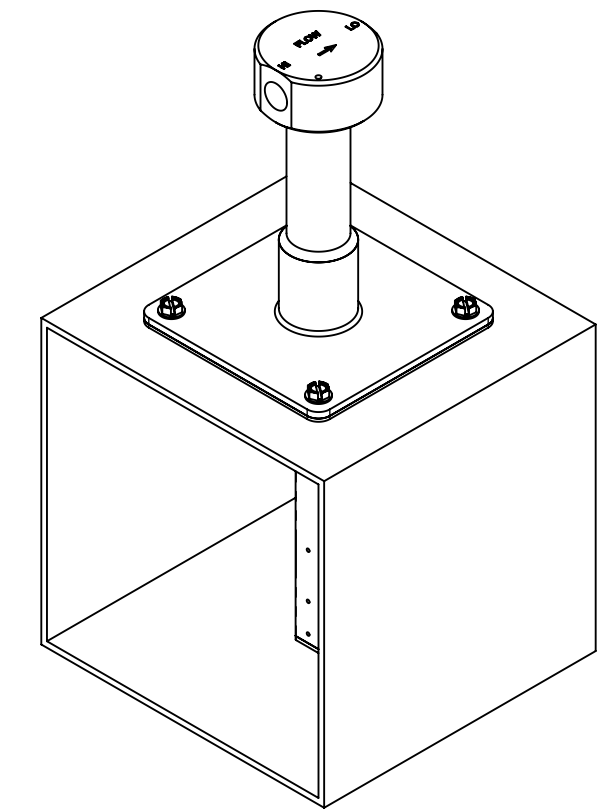
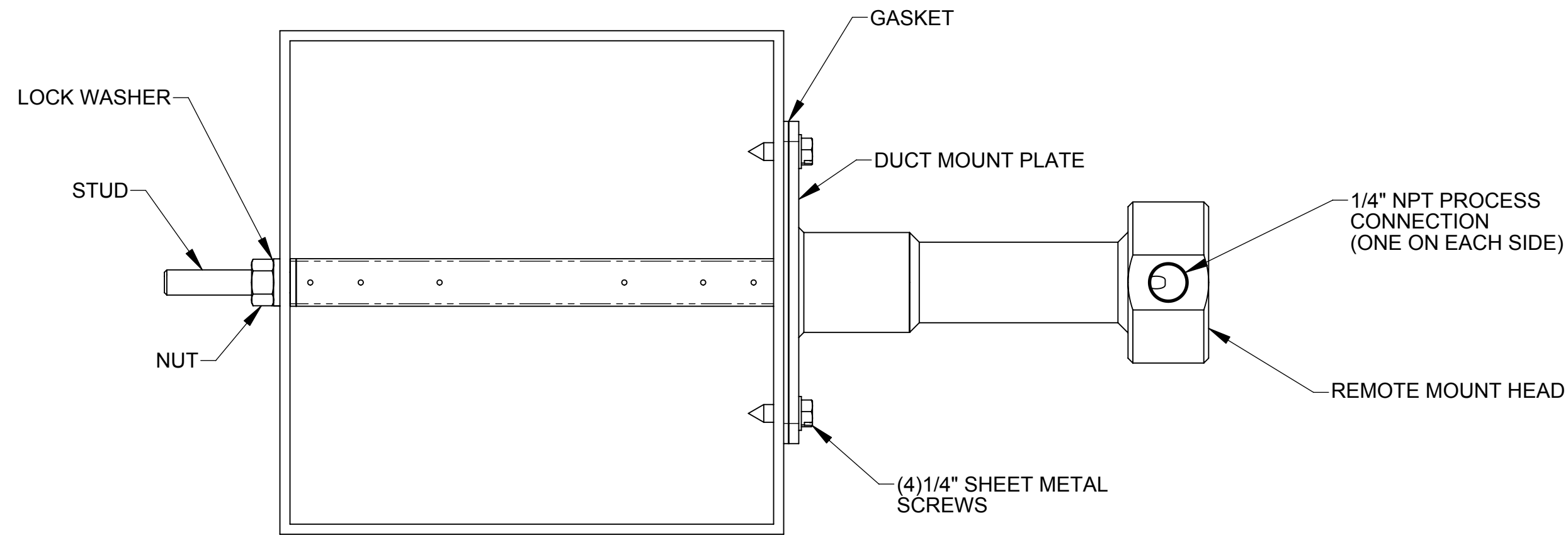


| REVISIONS | | | | |
|-----------|--|----------|-------|----------|
| REV | DESCRIPTION | CHG.NO. | APP'D | DATE |
| AB | REVISED 285 TYPE I DRAWINGS TO SHOW FLANGE MOUNTING DIMENSIONS | EC006521 | JR | 06/13/06 |



CAUTION
 FOR ACCURATE FLOW MEASUREMENT
 THE CORRECT HOLE SIZE IN PIPE MUST BE:
3/4 INCH (19mm)
 DO NOT DRILL OVERSIZE
 DO NOT TORCH CUT HOLE

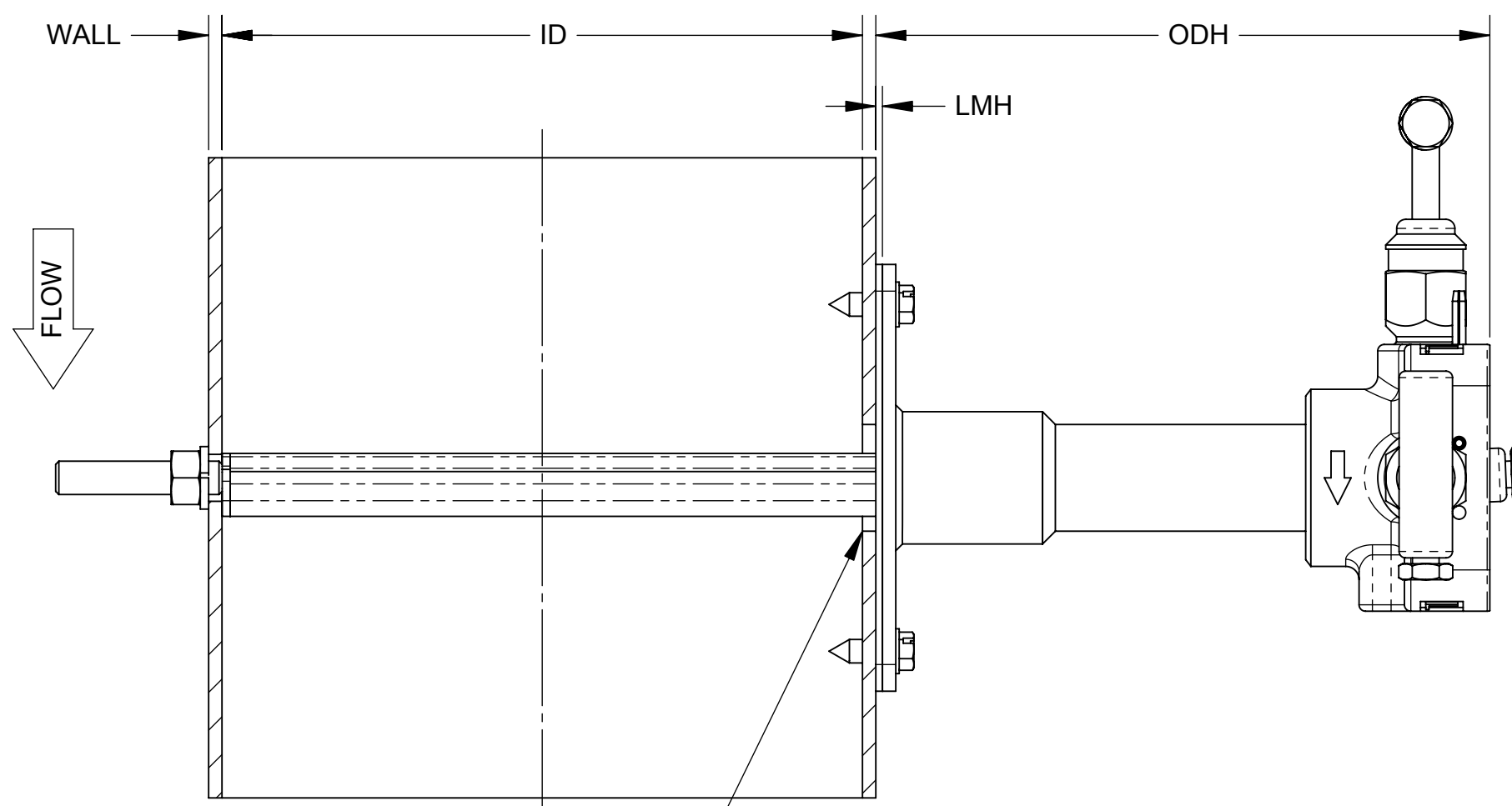
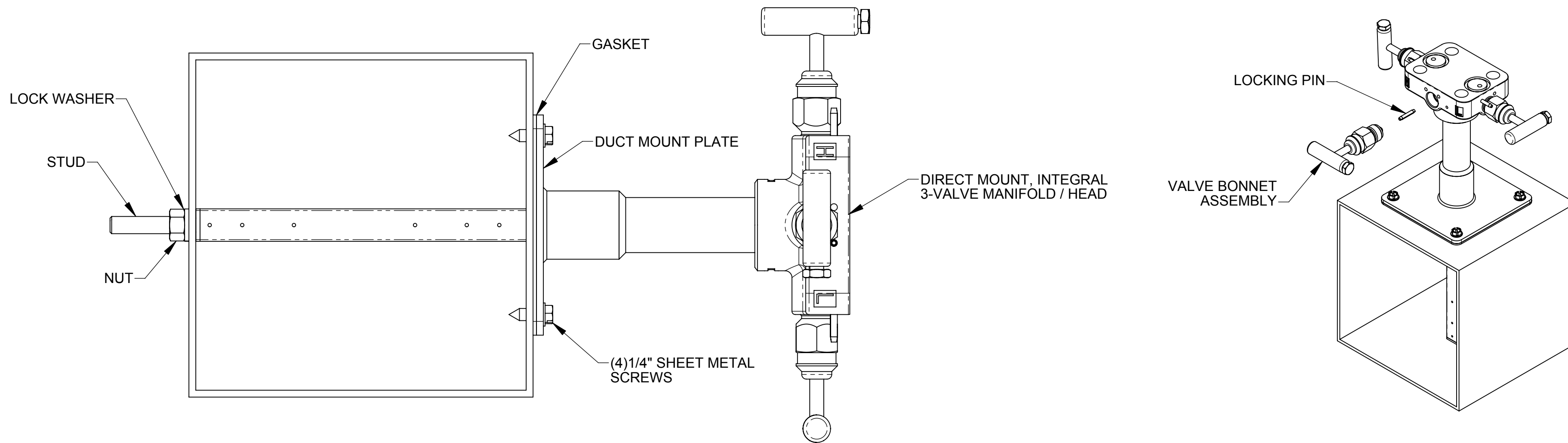
REMOTE MOUNT HEAD OPTION

| | | | | | |
|--|--|----------------------|----------|---|------------------------|
| *UNLESS OTHERWISE SPECIFIED DIMENSIONS IN INCHES (MM) | | TYPE I | | ROSEMOUNT® BOULDER, COLORADO | |
| *ALL DIMENSIONS ARE NOMINAL AND ARE FOR REFERENCE ONLY | | DR. jrumsey | 01/17/05 | TITLE DIMENSIONAL DRAWING FOR 285 SENSOR SIZE 1 ANNUBAR, DUCT MOUNT W/O COMPRESSION FITTING | |
| | | APPROVAL | | SIZE C | DRAWING NO. 00285-1001 |
| | | DRAWING M.Montgomery | 03/25/05 | | |
| | | TAGGING | | | |
| | | SPECIALS | | SCALE: NONE | |
| | | | | SHEET 1 OF 5 | |

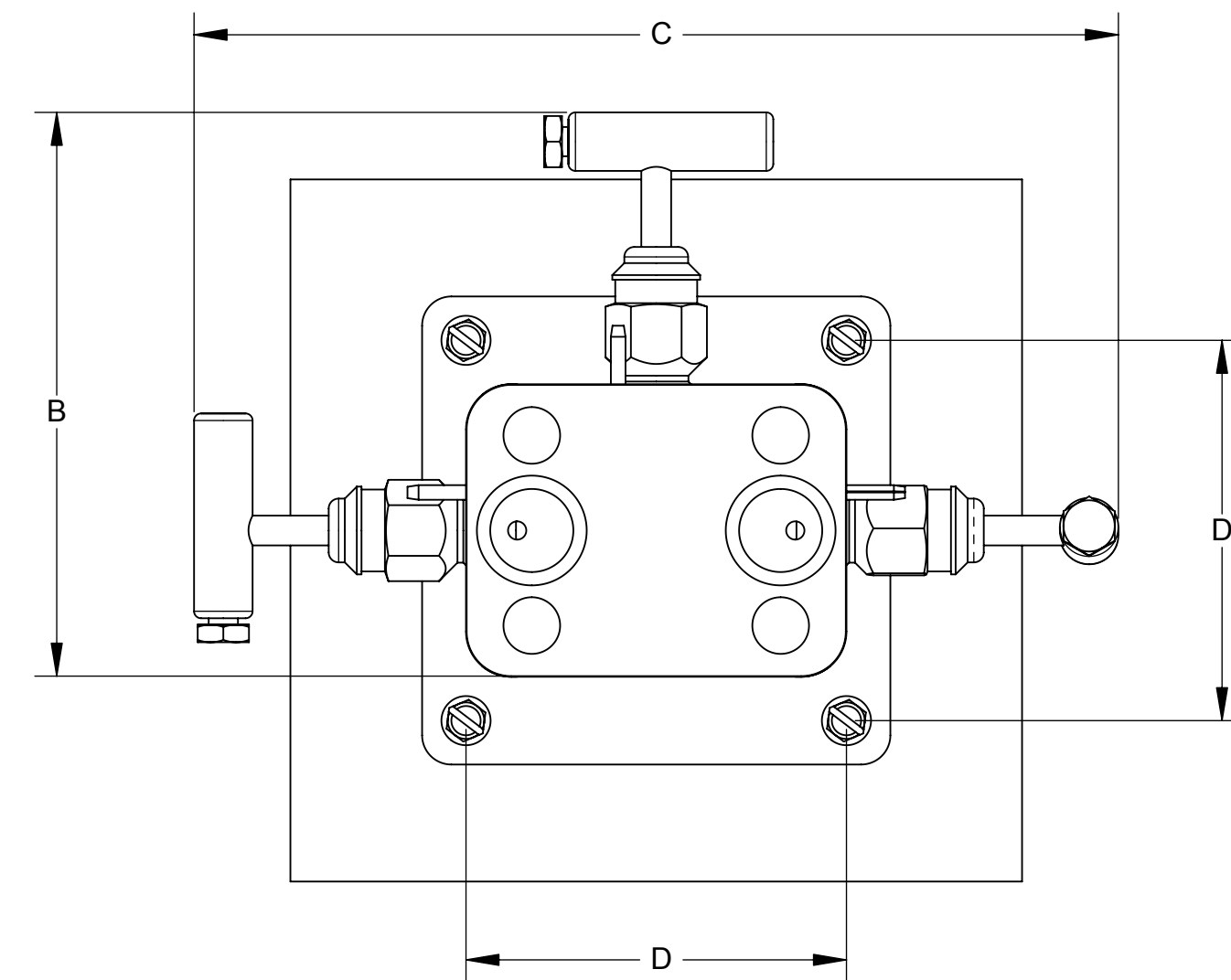
NOTES:

1. ROSEMOUNT INC. CERTIFIES THIS DRAWING IS IN ACCORDANCE WITH ROSEMOUNT ENGINEERING SPECIFICATIONS AND ACCURATELY REPRESENTS THE EQUIPMENT FURNISHED.
2. ANNUBAR® PRIMARY FLOW ELEMENT IS ACCURATE ONLY WITH CORRECT SIZED DRILLED MOUNTING HOLE. NO TORCH CUT ALLOWED. TOLERANCE $+ .030 / - .000$ ($+ .8\text{mm} / - .000\text{mm}$)
3. SENSOR ORIENTATION SHOWN FOR DETAIL ONLY. FOR ACTUAL RECOMMENDED LOCATION AND ORIENTATION REFER TO PRODUCT DATA SHEET 00813-0100-4028, AND THE QUICK INSTALLATION GUIDE (QIG) 00825-0100-4031.
4. FIELD WELD. REFER TO INSTALLATION INSTRUCTIONS FOR WELD REQUIREMENTS.
5. MAXIMUM PRESSURE: 10 PSIG; MAX TEMPERATURE: 300°F FOR INTEGRAL TRANSMITTER MOUNTING AND 850° FOR REMOTE MOUNTING.
6. FOR MODEL SELECTIONS, REFER TO ROSEMOUNT PRODUCT DATA SHEET 00813-0100-4028.
7. FOR REMOTE MOUNT INSTRUMENT CONNECTIONS, ORIENTATION OF INSTRUMENT CONNECTION ASSEMBLY IS FOR REFERENCE ONLY, UNLESS OTHERWISE NOTED. FOR COMPLETE INSTRUCTIONS, REFER TO PRODUCT DATA SHEET 00813-0100-4028, AND THE QUICK INSTALLATION GUIDE (QIG) 00825-0100-4031.
8. FOR REMOTE MOUNT INTEGRAL ORIENTATION, ASSEMBLY IS THE SAME ON HORIZONTAL OR VERTICAL LINE.

| TABLE 1 - DIMENSIONS | |
|----------------------|----------------|
| DIMENSIONS | VALUE (MAX) |
| ODH | 7.00 (177.8mm) |
| B | 5.00 (127.0mm) |
| C | 9.00 (228.6mm) |
| D | 3.25 (82.6mm) |
| LMH | 0.1 (2.5mm) |

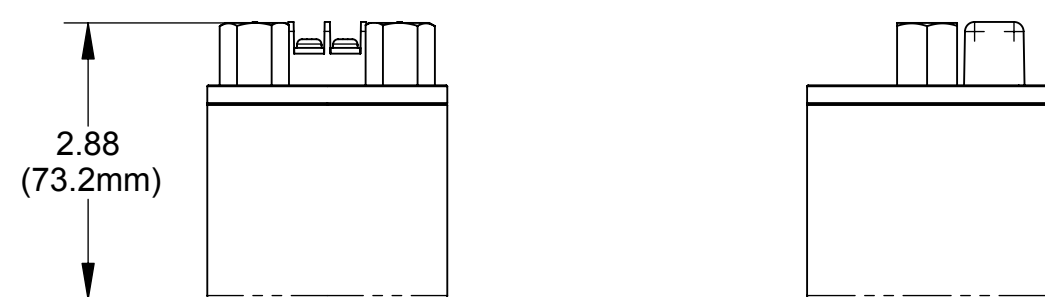
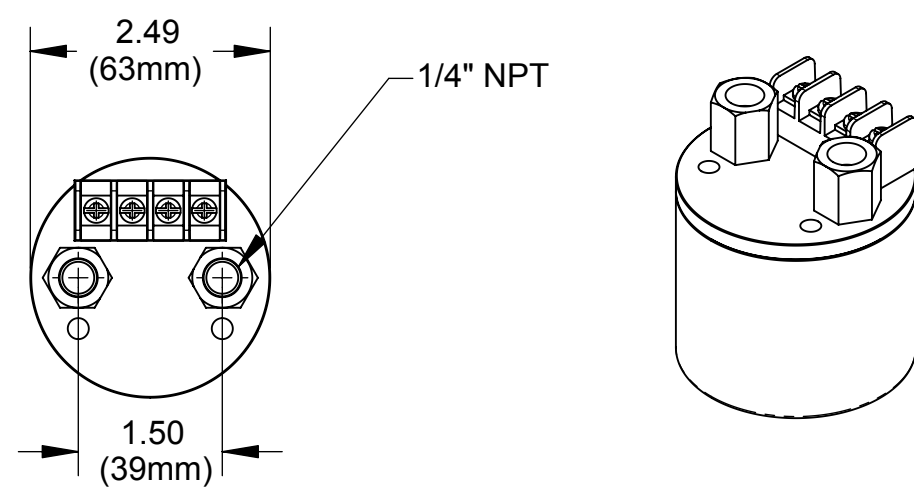
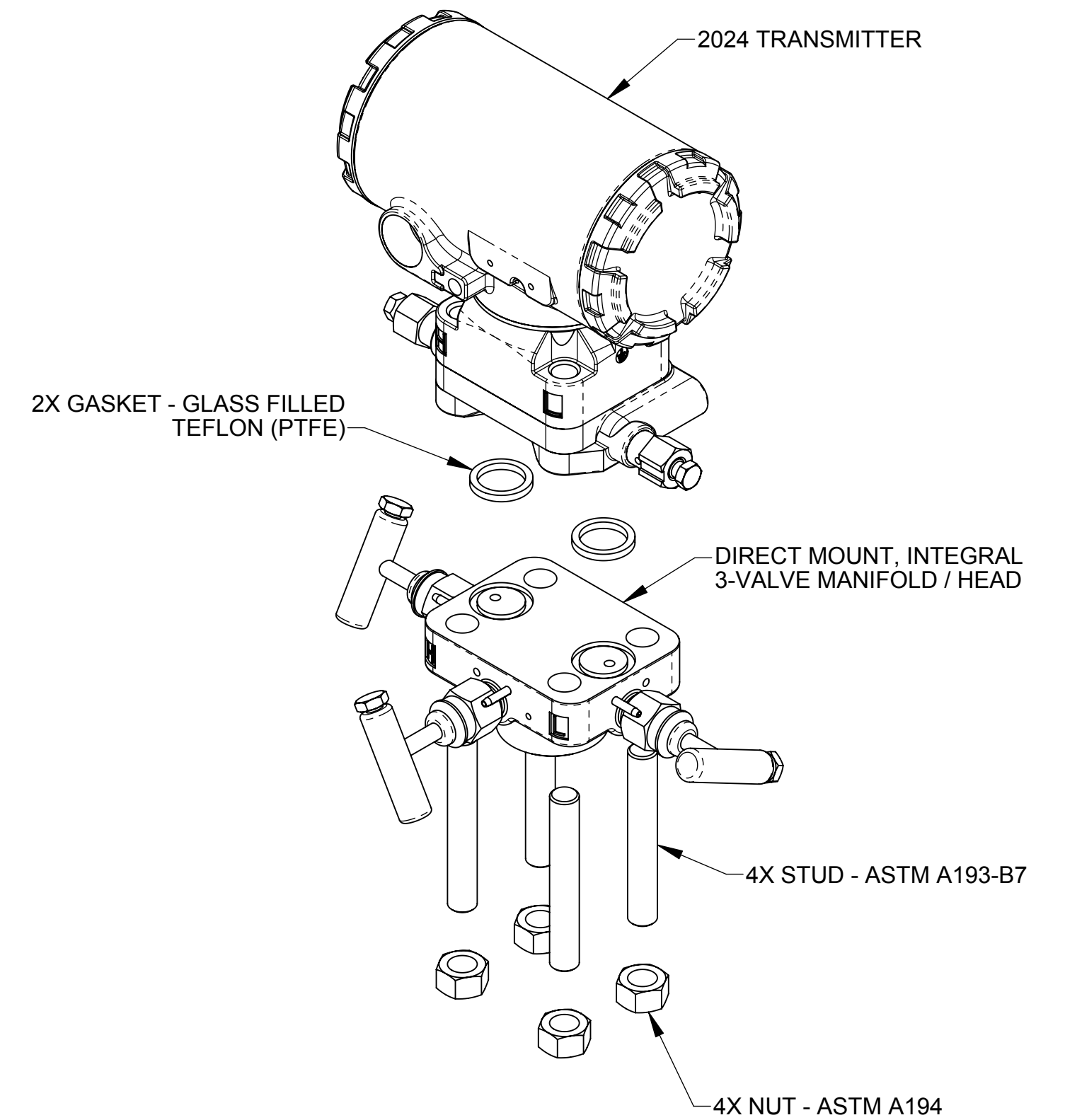
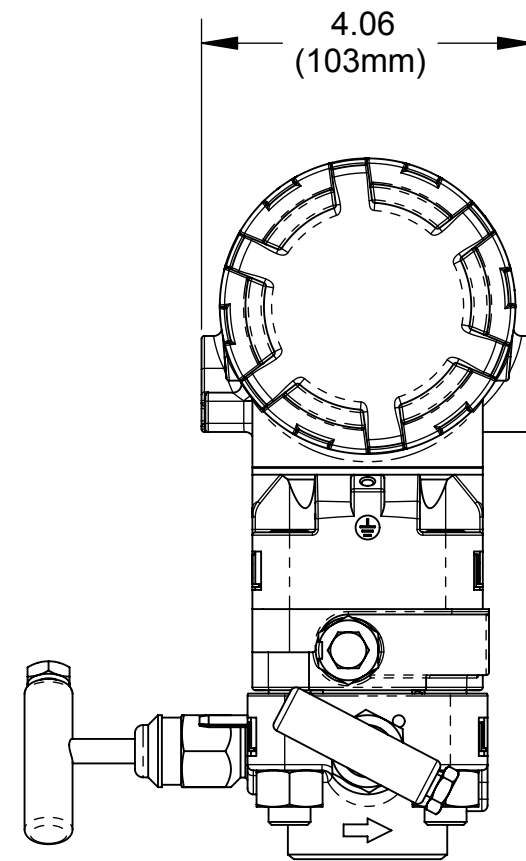
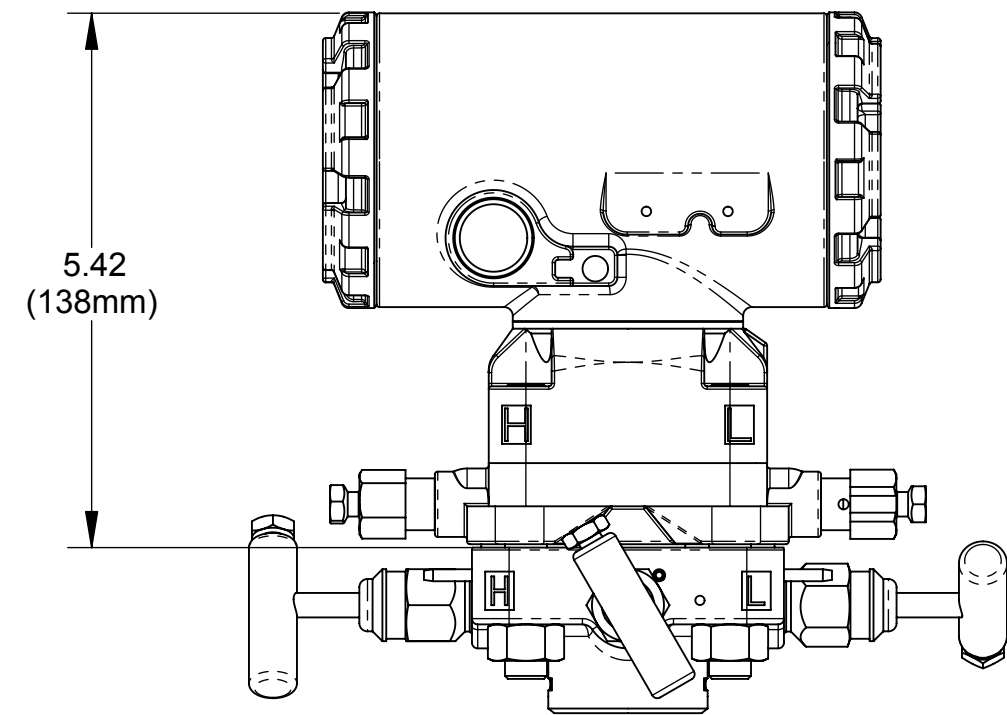
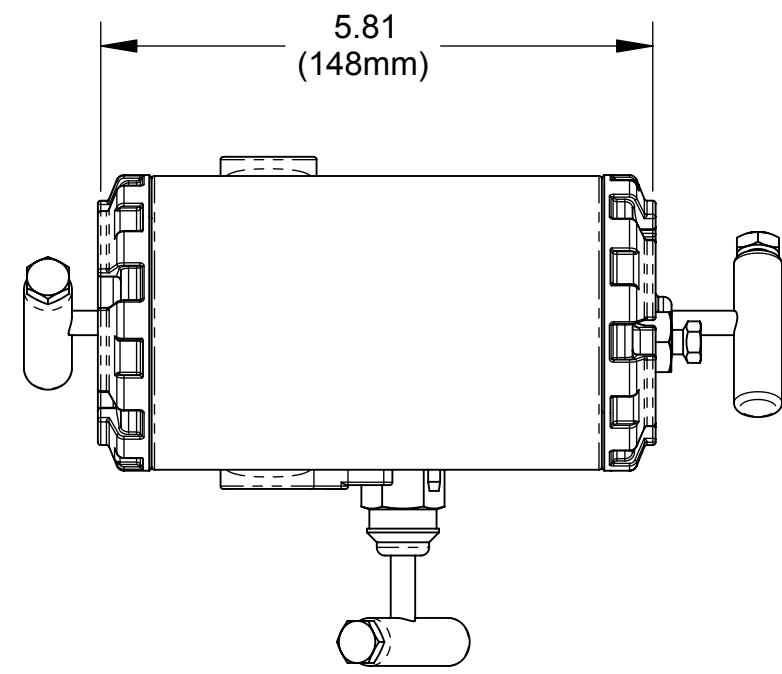


CAUTION
 FOR ACCURATE FLOW MEASUREMENT
 THE CORRECT HOLE SIZE IN PIPE MUST BE:
3/4 INCH (19mm)
 DO NOT DRILL OVERSIZE
 DO NOT TORCH CUT HOLE



DIRECT MOUNT HEAD OPTION

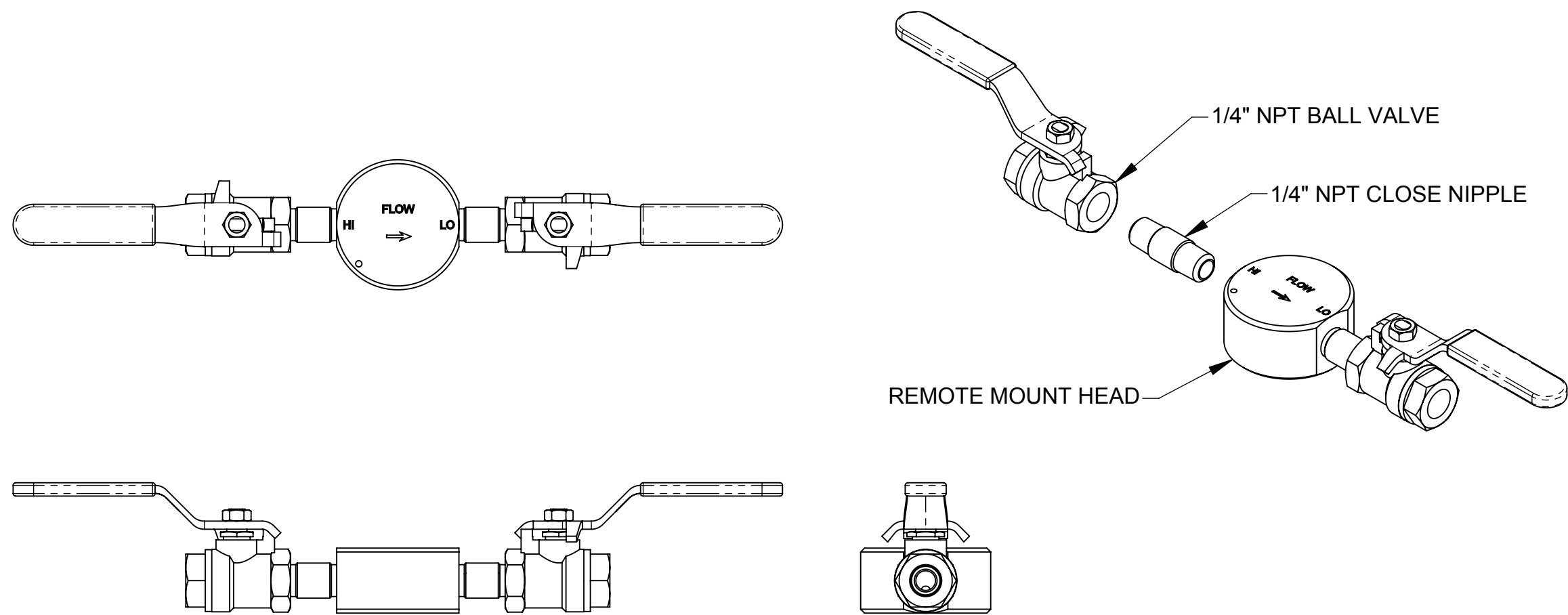
| | | |
|-------------------|----------|----------------------------------|
| ROSEMOUNT® | | |
| BOULDER, COLORADO | | |
| SIZE A | FSCM.NO. | DRAWING NO. 00285-1001 |
| SCALE: 1:4 | WT. | SHEET: 3 of 5 |



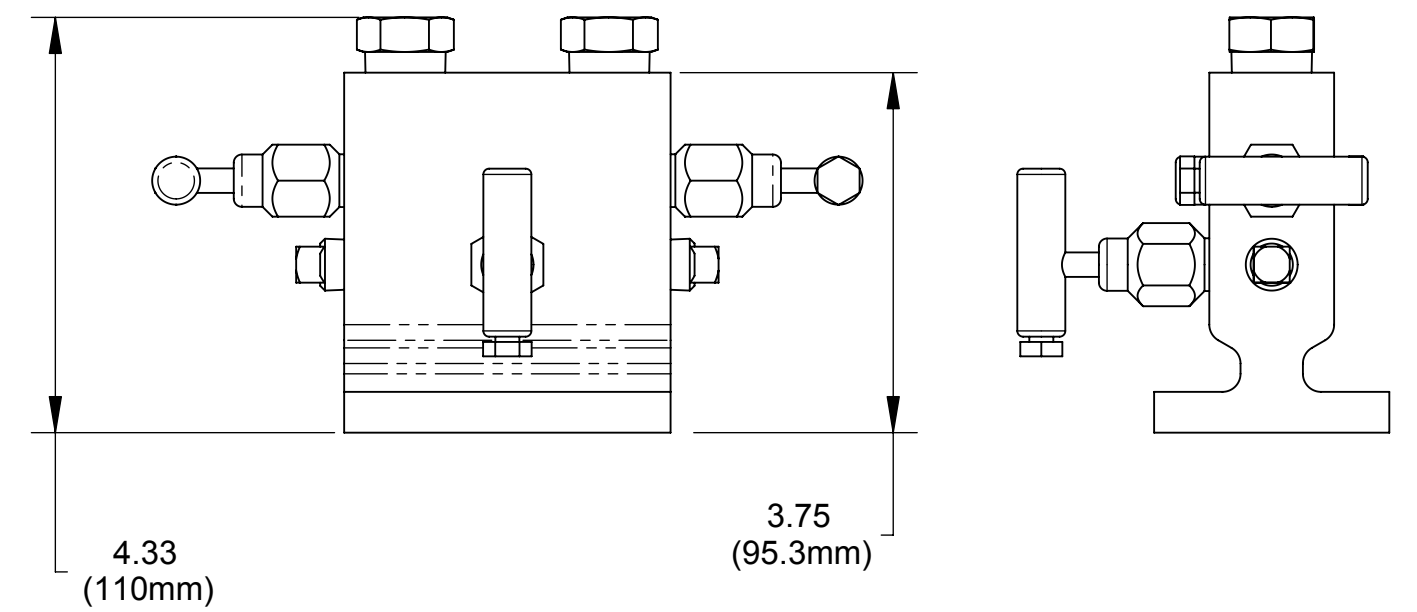
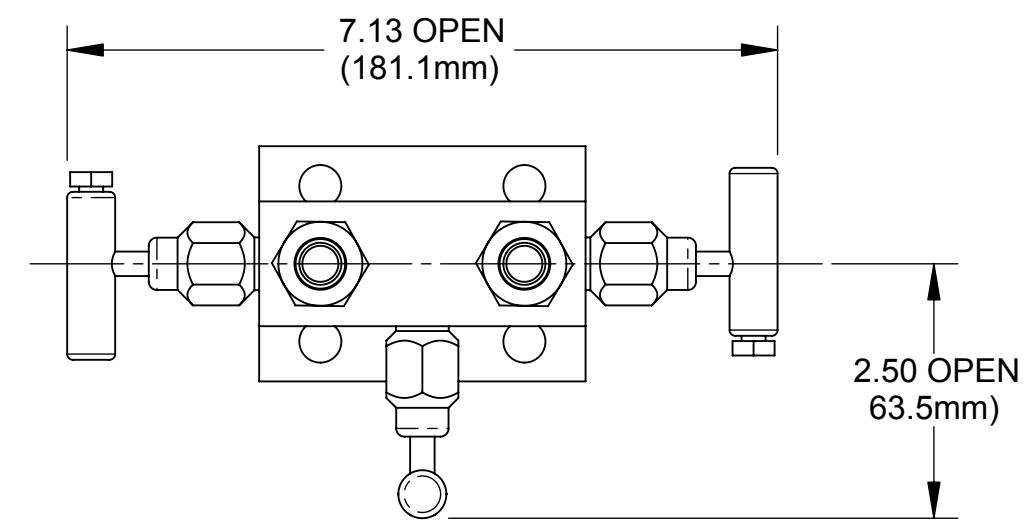
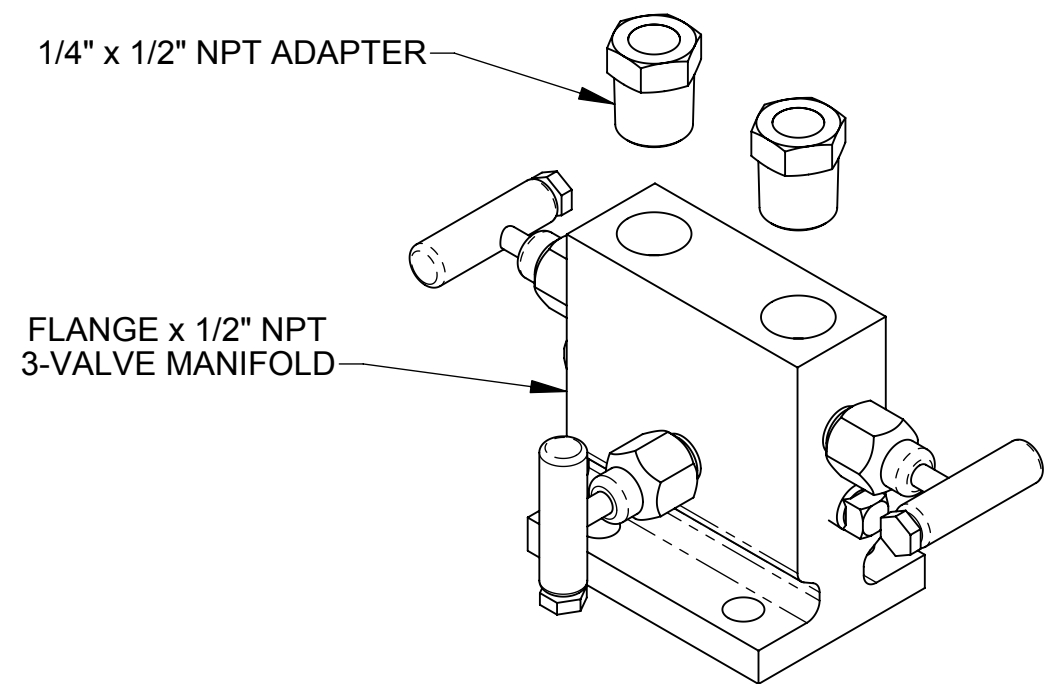
**OPTIONAL 951 DRY GAS TRANSMITTER
(REMOTE MOUNT ONLY)**

**DIRECT MOUNT ELECTRONICS
CONNECTION PLATFORM
WITH 2024 TRANSMITTER ATTACHED**

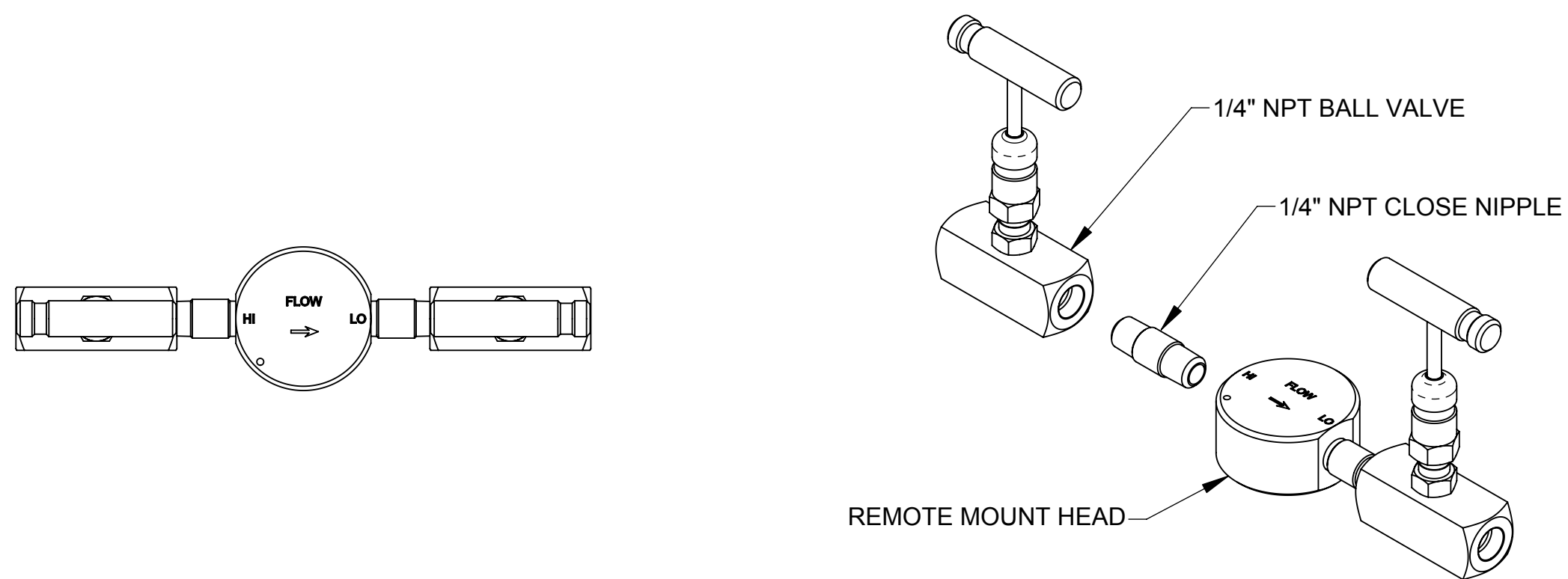
| | | |
|-------------------|----------|---------------------------|
| ROSEMOUNT® | | |
| BOULDER, COLORADO | | |
| SIZE A | FSCM.NO. | DRAWING NO. 00285-1001 |
| SCALE: 1:4 | WT. | SHEET: 4 of 5 |



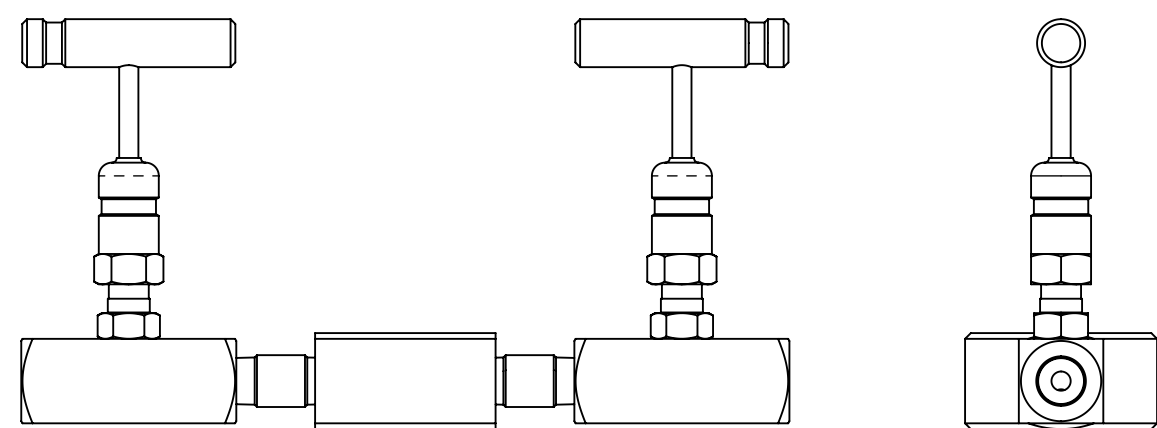
**REMOTE MOUNT ELECTRONICS
CONNECTION PLATFORM
WITH BALL VALVES**



**OPTIONAL REMOTE MOUNT
3-VALVE MANIFOLD**



**REMOTE MOUNT ELECTRONICS
CONNECTION PLATFORM
WITH NEEDLE VALVES**



| | | | |
|-------------------|----------|---------------|------------|
| ROSEMOUNT® | | | |
| BOULDER, COLORADO | | | |
| SIZE A | FSCM.NO. | DRAWING NO. | 00285-1001 |
| SCALE: 1:2 | WT. | SHEET: 5 of 5 | |