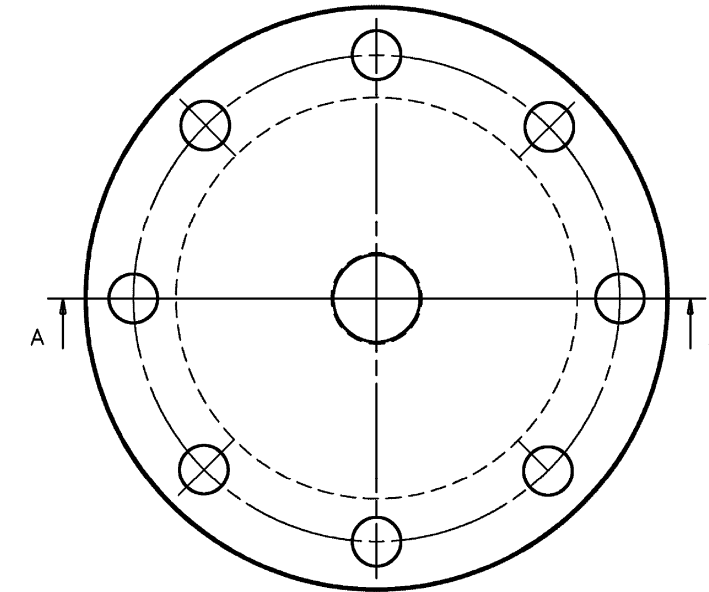
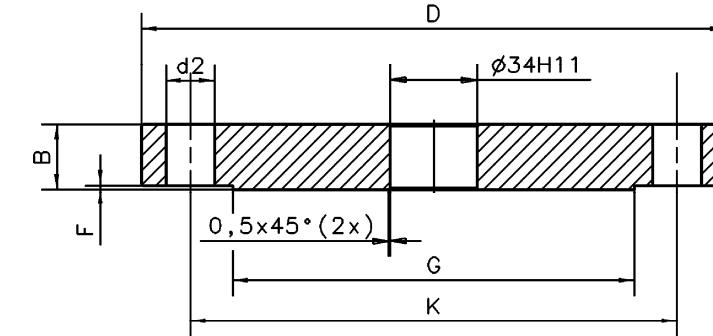
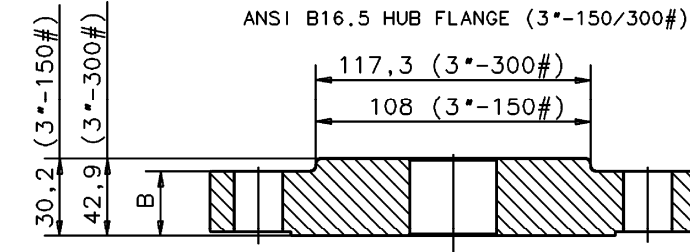


| PART NO | FLANGE | | | | DRILLING TEMPLATE | | RAISED FACE | | WEIGHT Kg | FLANGE TYPE | GASKET TYPE |
|-------------|-------------|-------------|--------|-------|-------------------|-----------|-------------|------|--------------|----------------|----------------|
| | TYPE | ACC TO STD: | D | B | K | d2 | G | F | | | |
| 9150074-369 | 2"-150# | ANSI B16.5 | ∅152,4 | 19,05 | ∅120,6 | ∅19,05-4X | ∅91,9 | 1,52 | 2,6 | | SEE NOTE 4 |
| 9150074-370 | 2"-300# | ANSI B16.5 | ∅165,1 | 22,3 | ∅127 | ∅19,05-8X | ∅91,9 | 1,52 | 3,4 | | SEE NOTE 4 |
| 9150074-371 | 2 1/2"-150# | ANSI B16.5 | ∅177,8 | 22,3 | ∅139,7 | ∅19,05-8X | ∅104,6 | 1,52 | 4,1 | | SEE NOTE 4 |
| 9150074-372 | 2 1/2"-300# | ANSI B16.5 | ∅190,5 | 25,4 | ∅149,4 | ∅22,35-8X | ∅104,6 | 1,52 | 5,1 | | SEE NOTE 4 |
| 9150074-350 | 3"-150# | ANSI B16.5 | ∅190,5 | 23,8 | ∅152,4 | ∅19,05-4X | ∅127 | 1,52 | 4,8 | HUB | 1a/1b |
| 9150074-351 | 3"-300# | ANSI B16.5 | ∅209,5 | 28,6 | ∅168,3 | ∅22,2-8X | ∅127 | 1,52 | 6,8 | HUB | 1a/1b |
| 9150074-352 | 4"-150# | ANSI B16.5 | ∅228,6 | 23,8 | ∅190,5 | ∅19,05-8X | ∅157,2 | 1,52 | 6,9 | | 1a/1b |
| 9150074-353 | 4"-300# | ANSI B16.5 | ∅254 | 31,8 | ∅200 | ∅22,2-8X | ∅157,2 | 1,52 | 11,6 | | 1a/1b |
| 9150074-373 | 4"-600# | ANSI B16.5 | ∅273 | 44,4 | ∅215,9 | ∅25,4-8X | ∅157,2 | 6,35 | 18 | | 1a/1b |
| 9150074-354 | 6"-150# | ANSI B16.5 | ∅279,4 | 25,4 | ∅241,3 | ∅22,2-8X | ∅215,9 | 1,52 | 11,6 | | 1a/1b |
| 9150074-355 | 6"-300# | ANSI B16.5 | ∅317,5 | 36,6 | ∅269,9 | ∅22,2-12X | ∅215,9 | 1,52 | 21,1 | | 1a/1b |
| 9150074-356 | 8"-150# | ANSI B16.5 | ∅342,9 | 28,5 | ∅298,4 | ∅22,2-8X | ∅269,9 | 1,52 | 20,8 | | 1a/1b |
| 9150074-357 | 8"-300# | ANSI B16.5 | ∅381 | 41,3 | ∅330,2 | ∅25,4-12X | ∅269,9 | 1,52 | 34,9 | | 1a/1b |
| 9150074-374 | DN50 PN40 | EN 1092-1 | ∅165 | 20 | ∅125 | ∅18-4X | NA | NA | 3,2 | TYPE 05 | SEE NOTE 4 |
| 9150074-375 | DN65 PN6 | EN 1092-1 | ∅160 | 14 | ∅130 | ∅14-4X | NA | NA | 2,2 | TYPE 05 | SEE NOTE 4 |
| 9150074-376 | DN65 PN40 | EN 1092-1 | ∅185 | 22 | ∅145 | ∅18-8X | NA | NA | 4,3 | TYPE 05 | SEE NOTE 4 |
| 9150074-358 | DN80 PN16 | EN 1092-1 | ∅200 | 20 | ∅160 | ∅18-8X | NA | NA | 4,7 | TYPE 05 | SEE NOTE 4 |
| 9150074-359 | DN80 PN40 | EN 1092-1 | ∅200 | 24 | ∅160 | ∅18-8X | NA | NA | 5,8 | TYPE 05 | SEE NOTE 4 |
| 9150074-360 | DN100 PN16 | EN 1092-1 | ∅220 | 20 | ∅180 | ∅18-8X | NA | NA | 5,5 | TYPE 05 | SEE NOTE 4 |
| 9150074-361 | DN100 PN40 | EN 1092-1 | ∅235 | 24 | ∅190 | ∅22-8X | NA | NA | 7,4 | TYPE 05 | SEE NOTE 4 |
| 9150074-362 | DN150 PN16 | EN 1092-1 | ∅285 | 22 | ∅240 | ∅22-8X | NA | NA | 10,3 | TYPE 05 | SEE NOTE 4 |
| 9150074-363 | DN150 PN40 | EN 1092-1 | ∅300 | 28 | ∅250 | ∅26-8X | NA | NA | 14,4 | TYPE 05 | SEE NOTE 4 |
| 9150074-364 | DN200 PN16 | EN 1092-1 | ∅340 | 24 | ∅295 | ∅22-12X | NA | NA | 16,3 | TYPE 05 | SEE NOTE 4 |
| 9150074-365 | DN200 PN40 | EN 1092-1 | ∅375 | 34 | ∅320 | ∅30-12X | NA | NA | 27,4 | TYPE 05 | SEE NOTE 4 |
| 9150074-366 | JIS 100 10K | JIS B 2220 | ∅210 | 18 | ∅175 | ∅19-8X | NA | NA | 4,4 | | TYPE R |
| 9150074-367 | JIS 150 10K | JIS B 2220 | ∅280 | 22 | ∅240 | ∅23-8X | NA | NA | 9,9 | | TYPE R |
| 9150074-368 | JIS 200 10K | JIS B 2220 | ∅330 | 22 | ∅290 | ∅23-12X | NA | NA | 13,7 | | TYPE R |



- ④ GASKETS FOR EN 1092-1 FLANGES:
SOFT GASKET (EN 1514-1) WITH MIN THICKNESS OF 1.5mm.
GASKET FOR ANSI B16.5 FLANGES:
SOFT GASKET (1a) WITH MIN THICKNESS OF 1.5mm.
- ③ DIMENSIONS AND TOLERANCES IN ACC. WITH ANSI B16.5, EN 1092-1 AND JIS B 2220 UNLESS OTHERWISE STATED (DIMENSIONS IN TABLE, ONLY REFERENCE MEASURES)
- ② MARKING: IN ACC WITH ANSI B16.5, EN AND JIS STD. (NO MARKING OF "B16.5", "1092-1" OR "2220" ON FLANGE)
- ① MATERIAL: STAINLESS STEEL A182 Gr.F316L AND EN 10222-5-1.4404 (BOTH MATERIALS MARKED ON THE FLANGE AND INCLUDED IN THE INSPECTION DOCUMENT)

| | | | | |
|--|--------------------------------------|----------------------------|----------------------------------|-----------------------|
| 9150074-672 | ISSUED BY: GU-HF | WEEK: 0224 | PRODUCT CODE: PRO | MATERIAL: SEE NOTE 1. |
| | APPROVED BY: GU-MK | WEEK: 0224 | DOC. TYPE: 0 | FILE: I-DEAS |
| | ALL DIMENSIONS ARE IN MILLIMETRES. | | FINISH, UNLESS OTHERWISE STATED: | |
| | TOLERANCES, UNLESS OTHERWISE STATED: | | 6.3 | |
| FOR MACHINING: ISO 2768 mK | | FOR CASTING: ISO 8062 CT10 | | |
| FOR WELDING: SS-EN ISO 13920 A,E | | 1 ST ANGLE | | |
| SAAB ROSEMOUNT | | SCALE: - | | |
| DNG NO. 9150074-672 | | | ISSUE SHEET 1 / 1 | |
| THE COPYRIGHT/OWNERSHIP OF THIS DOCUMENT IS AND WILL REMAIN OURS. THE DOCUMENT MUST NOT BE USED WITHOUT OUR AUTHORIZATION OR BROUGHT TO THE KNOWLEDGE OF A THIRD PARTY. CONTRAVENTION WILL BE PROSECUTED. SAAB MARINE ELECTRONICS. | | | | |

9150074-672