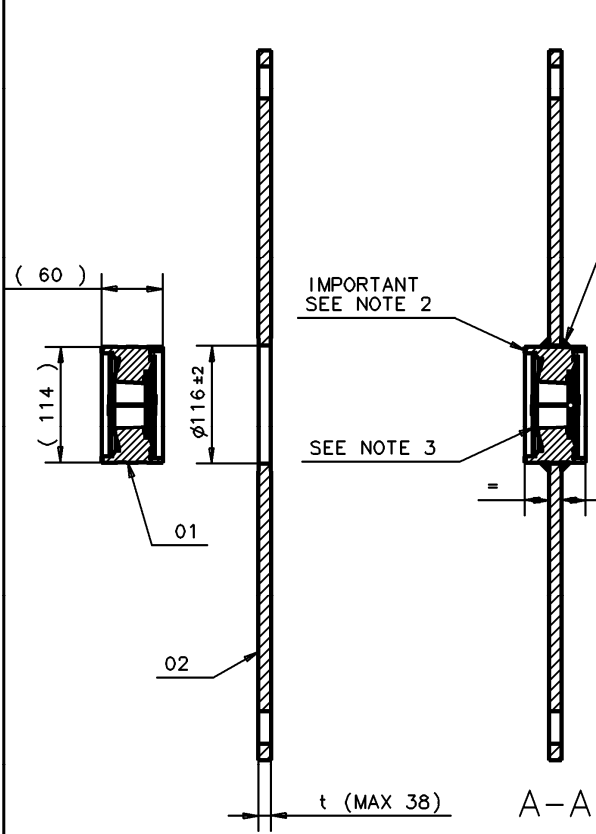


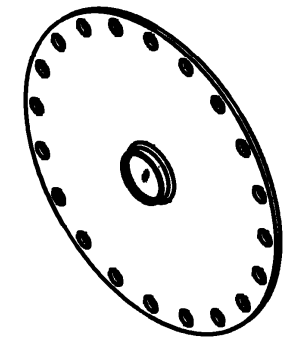
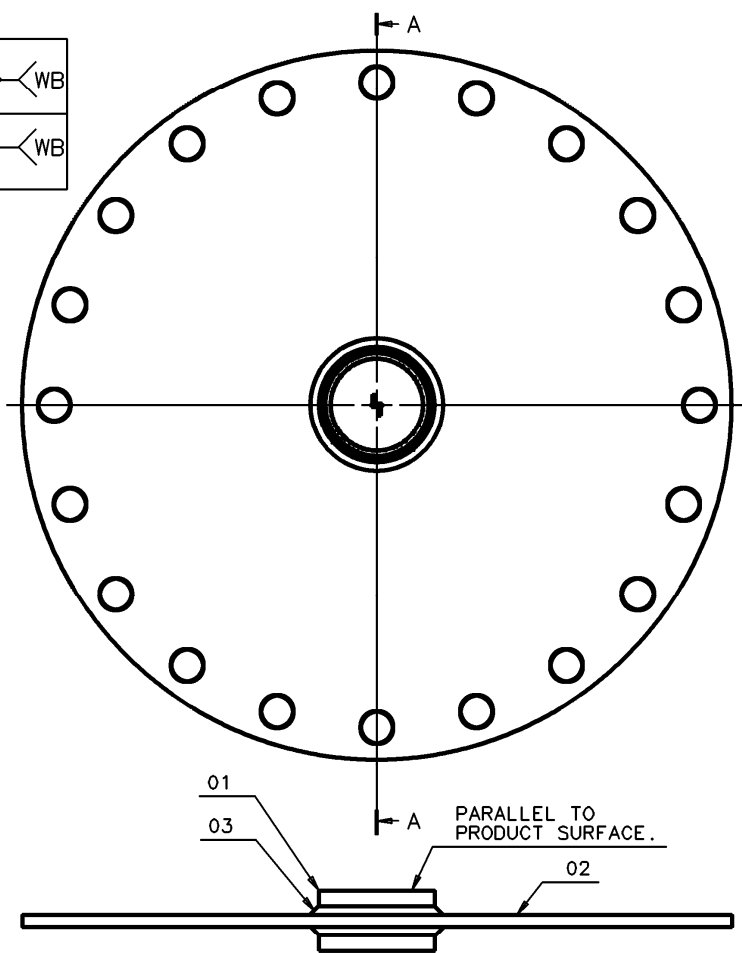
SEE NOTE 1

t =	5 TO	20	Ø a4	Ø a4	WB
t =	21 TO	38	Ø a6	Ø a6	WB



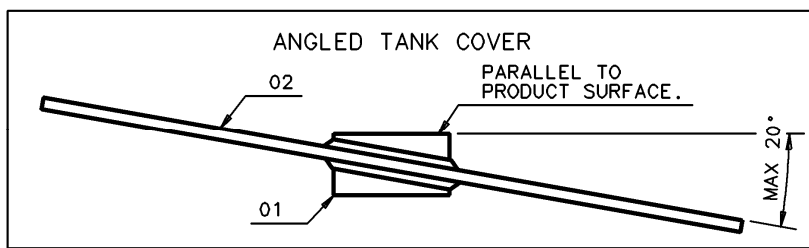
IMPORTANT
SEE NOTE 2

SEE NOTE 3



ISO-VIEW

- ③ WELD PROTECTION TO BE REMOVED AFTER WELD WORK.
- ② MARK GROOVE MUST BE DIRECTED OUT FROM THE TANK.
- ① REC. WELDING PIN Ok6770, Ok6771, Ok6775, AWS:A/SSA 5.4 E309L, AWS:A/SSA 5.4 E309MoL WELD DIMENSION IS ONLY RECOMMENDED. FOR PRESSURED APPLICATIONS SEE NATIONAL STANDARDS AND PRACTISE.



03	WELD PIN	-	SEE NOTE 1.	CUSTOMER
02	TANK FLANGE/COVER	1		CUSTOMER
01	FLANGE BALL T38-W	1	AISI 316L	SR/RMT
POS	ITEM DESCRIPTION	QTY	REMARK	SUPPLIER
ISSUED BY	WEEK	PRODUCT CODE	FILE	INSTALLATION DRAWING TITLE
GU-HF	0307	REX	IDEAS/ACAD	MECHANICAL INSTALLATION DWG
APPROVED BY	WEEK	ORIGINAL DWG NO.	SCALE	FLANGE BALL T38-W, WELDING
GST-TK	0307	9240003-944	-	
SAAB ROSEMOUNT		1 ST ANGLE	DOC TYPE	DWG NO.
			2	9240003-944
			ISSUE	SHEET
			2	1/1

THE COPYRIGHT/OWNERSHIP OF THIS DOCUMENT IS AND WILL REMAIN OURS. THE DOCUMENT MUST NOT BE USED WITHOUT OUR AUTHORIZATION OR BROUGHT TO THE KNOWLEDGE OF A THIRD PARTY. CONTRAVENTION WILL BE PROSECUTED. SAAB MARINE ELECTRONICS AB.